

Available in gas and watertight and fire-resistant versions

New gland module system for improved safety/fire safety in industrial plants

Aalten, The Netherlands, May 2018 – With the GLANDMOD system, Beele Engineering is providing a smart and effective alternative to gland plates. The modules can be directly attached to generators, motors and other (operating) equipment for incoming and outgoing cabling, as well as in control cabinets in industrial environments. The associated CET-A-SIL sealing plugs and a NOFIRNO rubber gasket are supplied for installing and finishing the system.

The GLANDMOD module and the CET-A-SIL sealing plugs in combination guarantee an IP68 rated watertight seal. The system was also exposed to a 1 bar explosion test, and is gas, dust and watertight up to > 0.4 bar. In addition, a fire-resistant version is available.

The GLANDMOD multi-cable transit module is available in HMPE plastic or aluminium and is explosion-proof. The rectangular module is available for various cable configurations.

The associated CET-A-SIL sealing plugs are made of high-quality NOFIRNO rubber. The plugs are available for a wide range of cable diameters and are quickly and easily installable.

The CET-A-SIL plugs consist of two parts that are both wrapped around the cable and are then pressed into the opening of the module frame. The plug's shape is such that this does not require any special force, while the shape of the module's transit openings matches the plug's shape for optimal safety and ease of installation. In addition to the regular sealing plugs, the module also contains easy to remove blind plugs for temporarily sealing transit openings. This makes it easy to

add or remove cables from the cabling package.

BEELE Engineering BV

Beunkdijk 11

7122 NZ

Aalten

The Netherlands

T : +31(0)543 461629

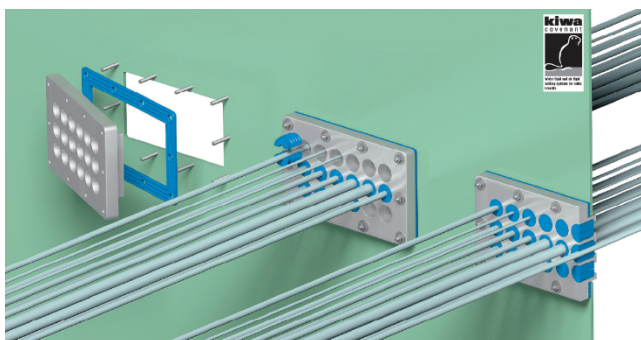
F : +31(0)543 461786

E : info@beele.com

I : www.beele.com

About Beele Engineering

Beele Engineering, in Aalten in the Netherlands, specialises in solutions for the fire-resistant, gasproof, smokeproof and waterproof sealing of pipe and cable transits. The company has its own R&D centres, test facilities, one of the most modern and comprehensive production centres in Europe, and high-quality logistics. This means that customers can be served with standard products quickly and smartly, but customised solutions can also be created for every specific wish. Beele Engineering is currently taking the next step in its 40-year existence with the development and construction of Sealing Valley, the worldwide centre for sealing technology.



With the GLANDMOD system, Beele Engineering is providing a smart and effective alternative to gland plates.

(Edited by: M. Franke, BETA PR & Media)