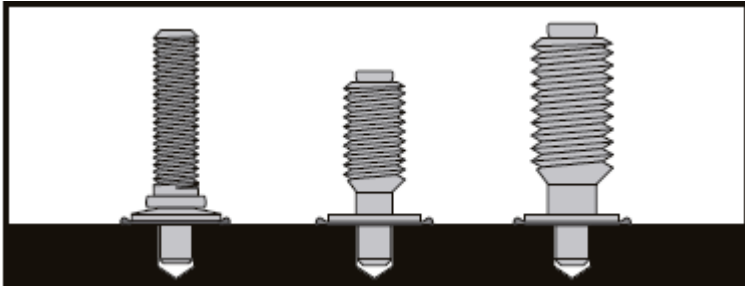
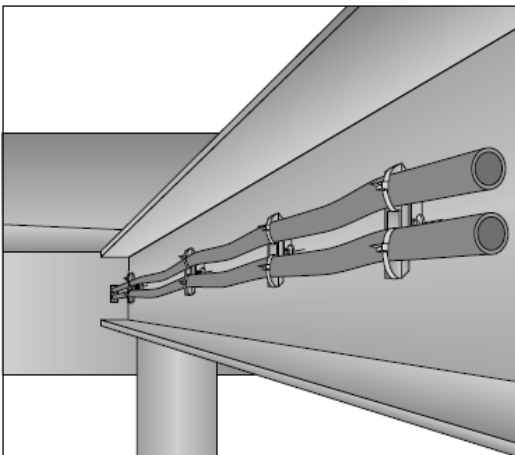
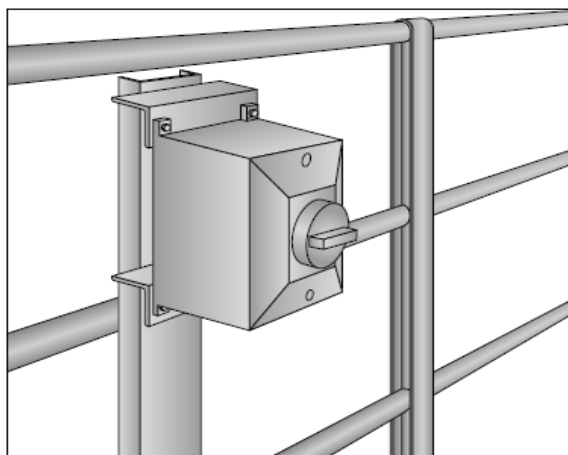
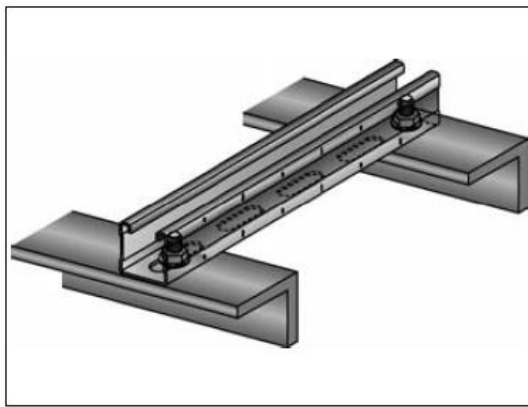
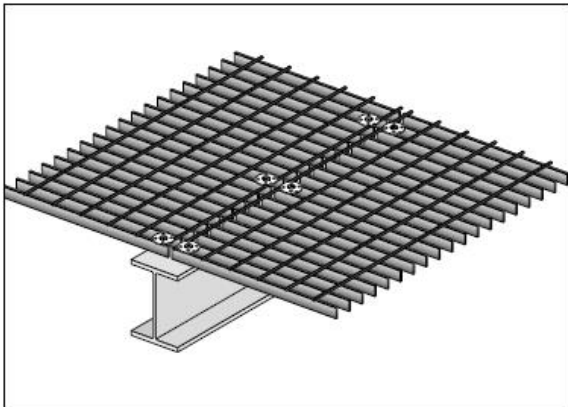


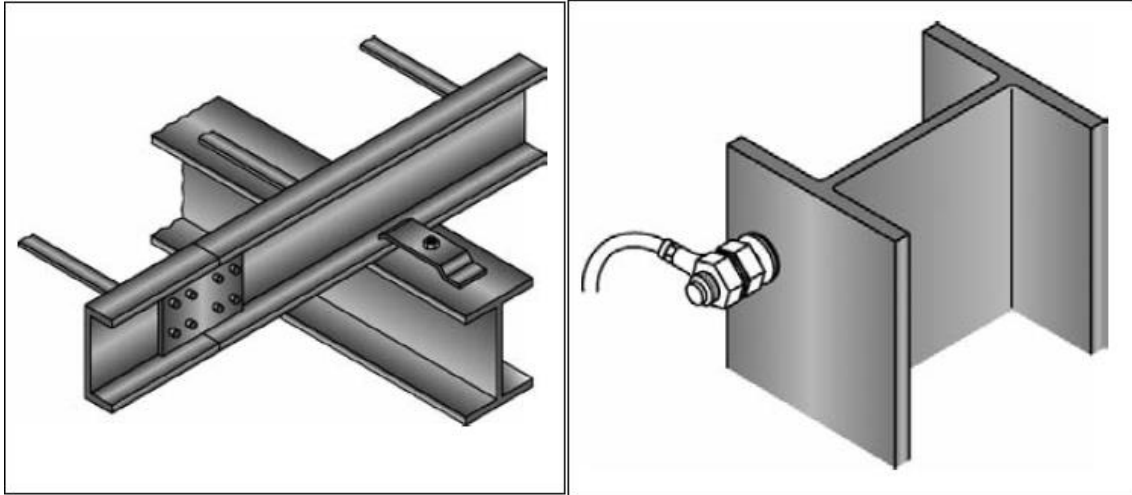
The XBT System – Simplified fastening to steel



Used for steel fixings for the following applications:

- Grating fastening systems
- Installation systems
- Fastening instrumentation
- Junction boxes and lighting
- Fastening cable/conduit connectors
- Fastening cable tray supports
- For grounding and bonding equipment
- External lighting protection systems



**No rework.**

Stud welding or through-bolting, for example, may require reworking of to the protective surface coating. With X-BT, the stud is set into a small pre-drilled hole and the drill entry point is then completely sealed by the stud washer during setting.

Simple and fast.

A minimal amount of training is all that's required for a user to be able to drive up to 100 studs per hour.

High corrosion resistance.

X-BT studs are made of high grade A4 (316 SS equivalent) stainless steel, making them the right choice for almost every corrosive environments.

High loading and pull-out values.

X-BT delivers performance comparable to methods such as stud welding.

Fasten to all steel shapes.

Unlike clamps, which are limited by the configuration of the base steel, the X-BT is ideal for use on hollow sections, channel sections, wide flanges and angles.

Fasten to all steel grades.

In addition to fastening to standard construction steel, the X-BT can also be used to fasten to high strength and thick steel.

Portable.

The fastening tool's self-contained energy source eliminates the need for electrical cords and heavy welding equipment.

No through-penetration.

The special process of drilling and driving results in secure fastening of the stud without through-penetration of the base material.

For more information call Darren Chetty on 011 237 3000



and the courage to embrace change. The headquarters of the Hilti Group are located in Schaan, Principality of Liechtenstein.